



HIS 262, F2

Images this page, clockwise from top: Daudi Chwa II, 34th Kabaka of Buganda; Kwame Nkrumah voting in independent Ghana's first general election; Mau Mau women in Kenya.

Instructor

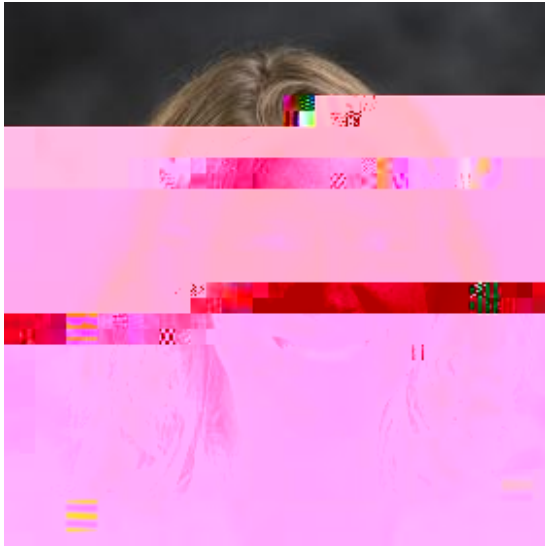
Eli abe h P e ced PRAY-

prevoste@grinnell.edu

<https://www.grinnell.edu/user/prevoste>

Office hours: MWF 10:00-11:00 a.m. CST (drop-in hours in my Webex room:

<https://grinnellcollege.webex.com/meet/prevoste>), or by appointment

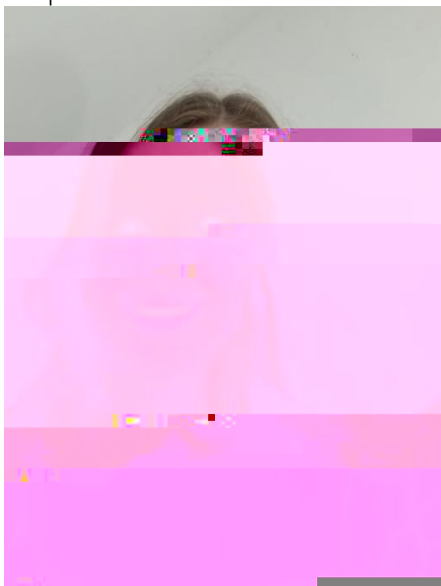


Curricular Assistant

A ika Li le

littlean@grinnell.edu

Drop-in hours TBA



Note: All times refer to CST zone; all page & chapter numbers refer to the most recent book editions (see book list, below).

Also note: Although this schedule constitutes the core framework for our class plan, I reserve the right to make changes in order to accommodate class rhythms, textual or technological access, or unforeseen circumstances.

Fri, Oct 30: Introduction

Preparation:

Kenyan 2007 election coverage (Pweb)

Cooper, *Africa Since 1940*, pp. 1-20

Parker & Rathbone, *African History*, ch. 1-3

Mon, Nov 2: Africa and the world in the 18th century
(see instructions in Pweb folder)

Preparation:

Parker & Rathbone, ch.

Cooper, Interlude & ch. 5

Fri, Dec 11: Trauma and memory

Preparation:

Film: *Sometimes in April* (film, Raoul Peck, 2004)

AWdoc 67

Mon, Dec 14: Contested histories

Preparation:

Parker & Rathbone, ch. 7

In evaluating your contributions, I will be looking for:
evidence-

Writing assignments (see above for deadlines; assignment sheets with specific prompts and instructions will be posted on Pweb):

(4 total, 40%):

Roughly once a week or every other week, you will submit a brief analysis (1-2 pages, 2-3 paragraphs, max 700 words) of the texts, responding to specific questions. Your final grade will include four of the five possible briefs, which means you may either skip one, or drop your lowest brief grade.

(6-7 pages, 25%)

Building on your previous work, you will analyze a specific aspect of modern African history by analyzing a body of primary and secondary sources.

Although different assignments will entail specific criteria, the same general questions will guide my evaluation of your writing:

- Have you followed the assignment?
- Have you framed and stated a compelling argument that goes beyond a superficial or obvious interpretation?
- Do you develop the argument logically and coherently through sound organization?
- Do you support the argument with appropriate evidence from the relevant primary and secondary sources, properly cited in Chicago style?
- Do you make insightful connections between different sources and perspectives and put them in productive conversation with each other?
- Is your language clear, eloquent, concise, and free of grammatical errors?

:

I am available to offer feedback at all stages of your work! Additionally:

The Writing, Reading, and Speaking Center supports students working on papers, projects, presentations, and applications. Schedule a session with one of the Center's professional instructors and get feedback as you interpret readings, talk through your ideas, analyze evidence, develop and organize arguments, craft introductions and conclusions, rewrite sentences and paragraphs, or plan presentations. Center instructors do not proofread papers, but they can show you how to edit your own work effectively. Make an appointment online:

wilkeaut@grinnell.edu , and discuss their needs with her. Students should then speak with me as early as possible in the semester so that we can discuss ways to coordinate accommodations and ensure full participation in the course.

Religious observation